

# ATEQ Engineered Products



Background to

# **ATEC EQUIPMENT**

# Introduction

**ATEC Equipment (Pty) Ltd** was established in 2011 to provide an innovative and flexible alternative to the existing major equipment suppliers, market and industry.

We are an innovative process solutions company, that specialize in supplying equipment and systems that meet our clients' particular needs, or develop customized solutions.

We are based in South Africa, but source globally to provide the best solutions to our clients throughout Africa.

We have already installed equipment under the **ATEQ** brand in Southern, Central and West Africa, and are looking to build long term relationships across the continent.

# Company Approach

**ATEC Equipment (Pty) Ltd** ensures quality from design through fabrication and supply, by following a stringent Quality Management System that governs all aspects of Quality Assurance and Quality Control.

We have established relationships with foundries, structural/platework fabricators and a variety of workshops for specialized fabrication and assembly.

We use global logistics companies to ensure deliveries to remote locations and can provide experienced crews to assist clients with installation and commissioning.

We also have access to full Engineering, Project Management and other project services.



Overview of

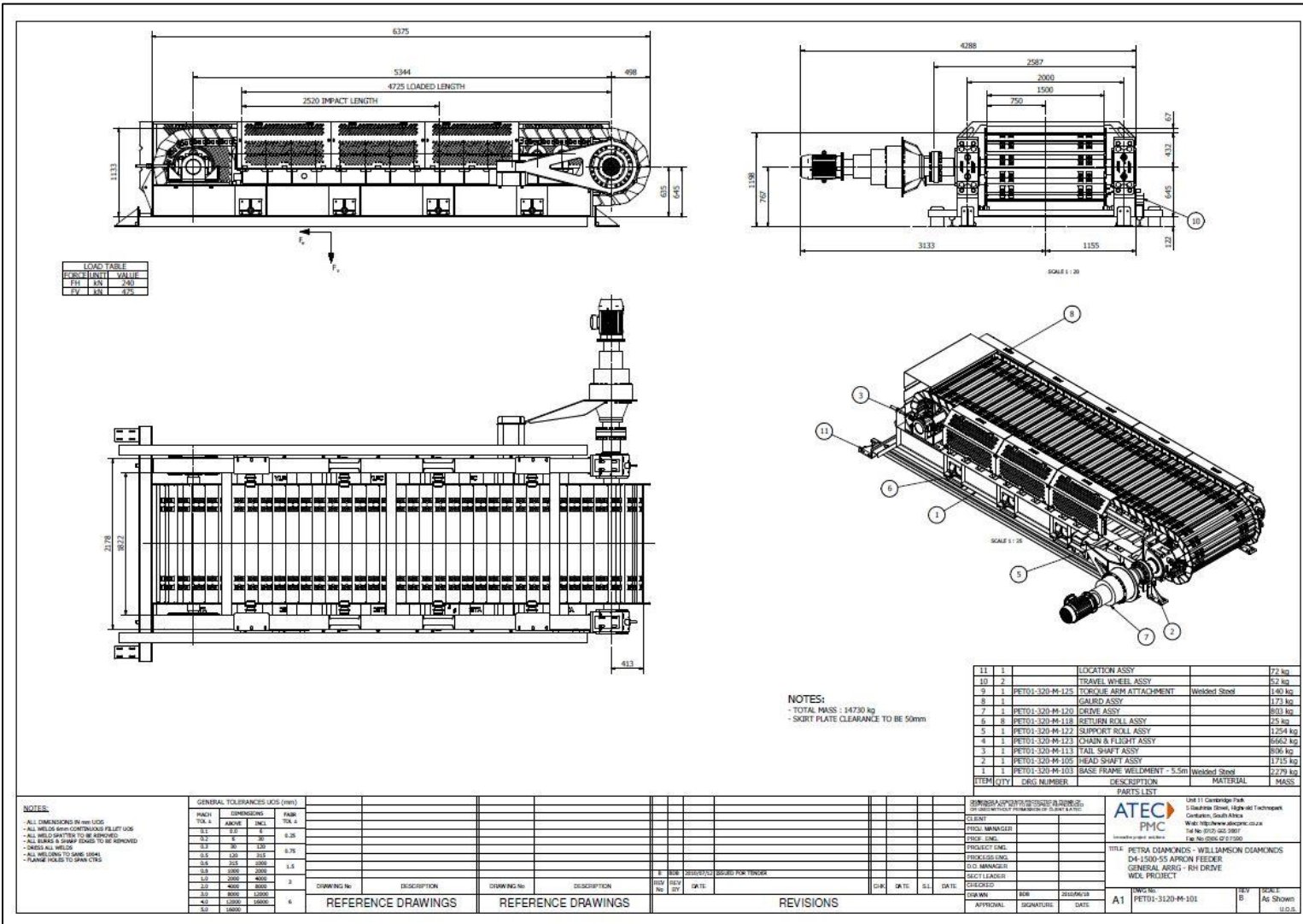
# **ATEQ ENGINEERED PRODUCTS**

# Product List

The products below are examples of equipment that we have developed to fulfil a particular need, but you are welcome to contact us for any other process requirements:

- Apron Feeders
- Belt Feeders
- Vibrating Grizzly Feeders
- Vibrating Pan Feeders
- Stacking Conveyors
- Tripper Conveyors
- Extraction Systems
- Bucket Elevators
- Air Slides
- Screw Feeders
- Scrubbers
- Mill Liner Handlers
- Mill Ball Chargers
- Ladle Tilters, etc.

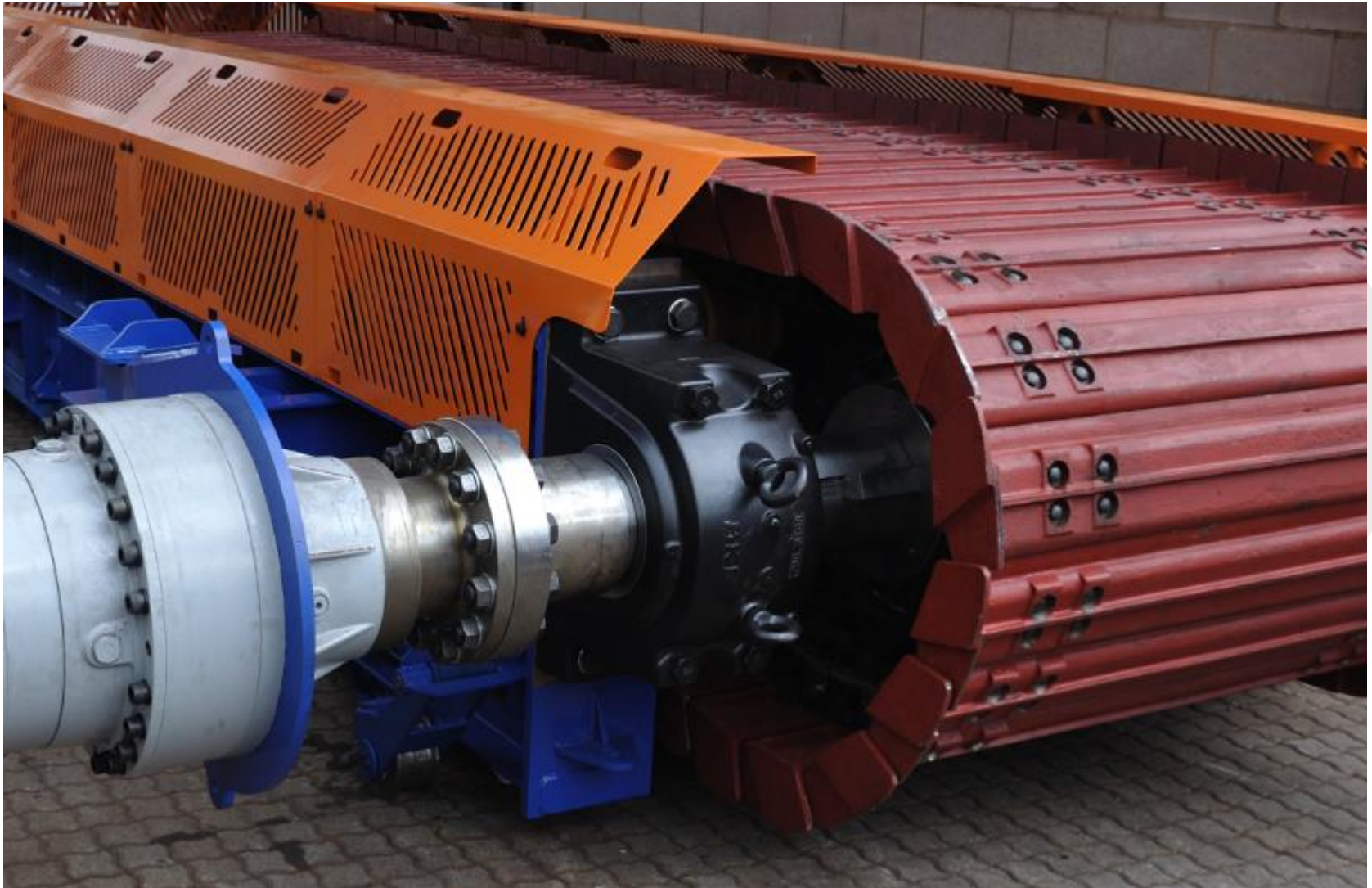
# Apron Feeder Design



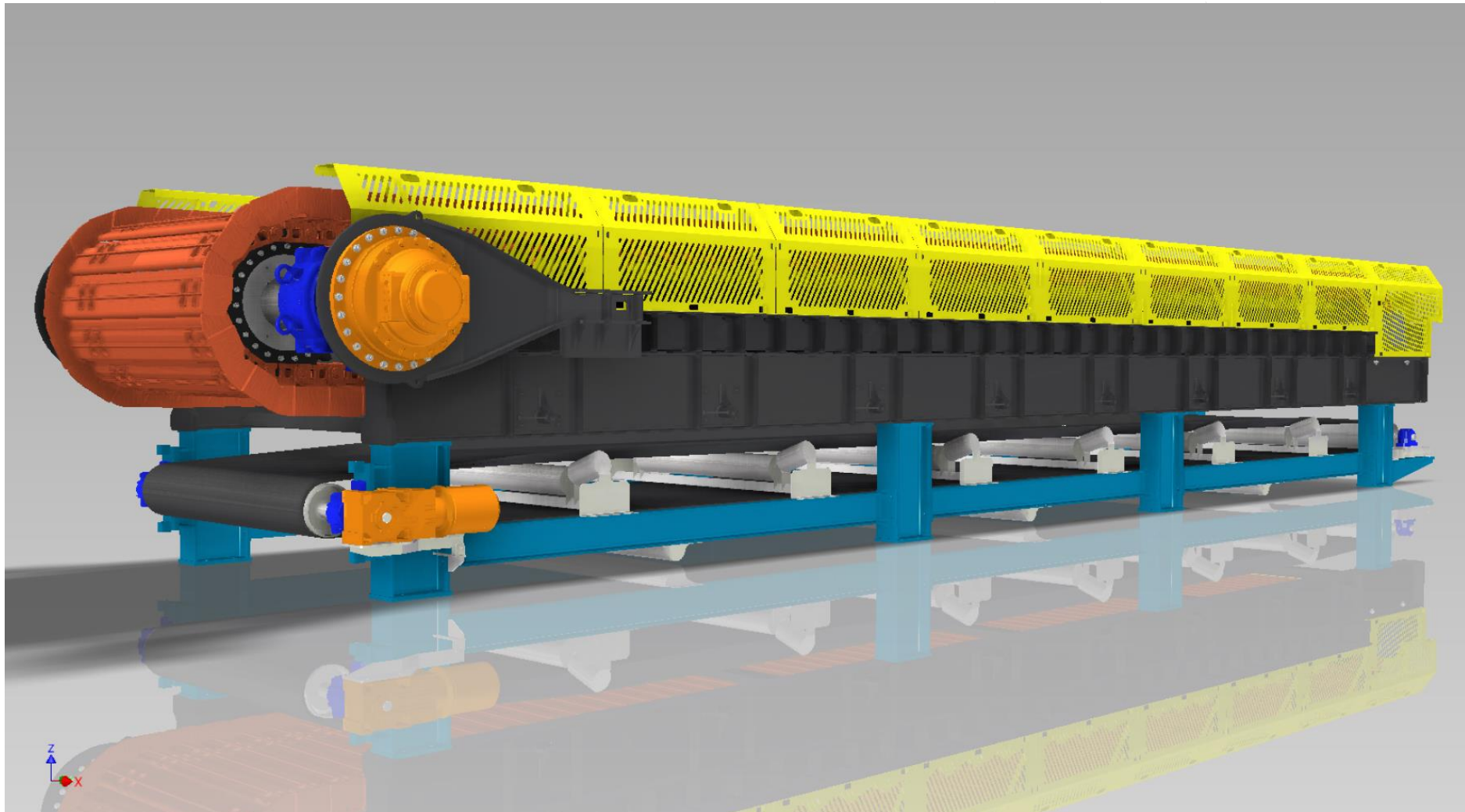
# Apron Feeder - Features

- Minimized operational height for ease of installation
- Enhanced safety aspects with integrated drive and track guards
- Reduced overall weight for benefits during transport and installation
- Flexible straight or right angle drive arrangements
- Simple and reliable hydraulic or electro-mechanical track drive systems
- Optional variable speed control through inverter drives
- Standard bearing elements designed for 100 000 hour duty
- Spherical bearings on main shafts eliminating misalignment
- Optimized track flights minimizing spillage of fines and build-up
- Impact bars to protect flights under extreme loading conditions
- Sealed bearings on track idlers improve reliability in arduous conditions
- Standard earth moving equipment chain, sprocket and wear components

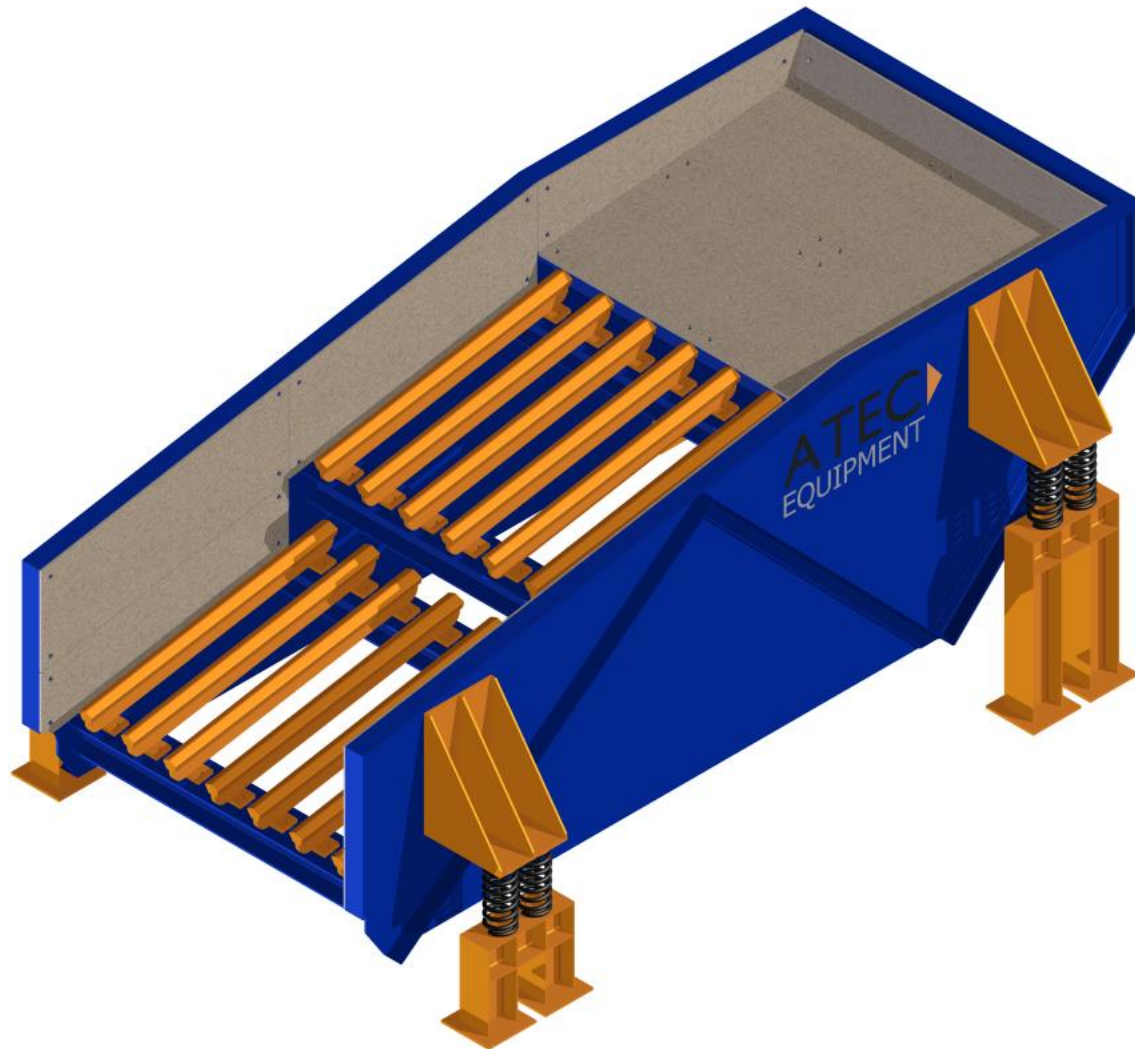
# Apron Feeder with electro-mechanical drive



# Apron Feeder with dribblings conveyor

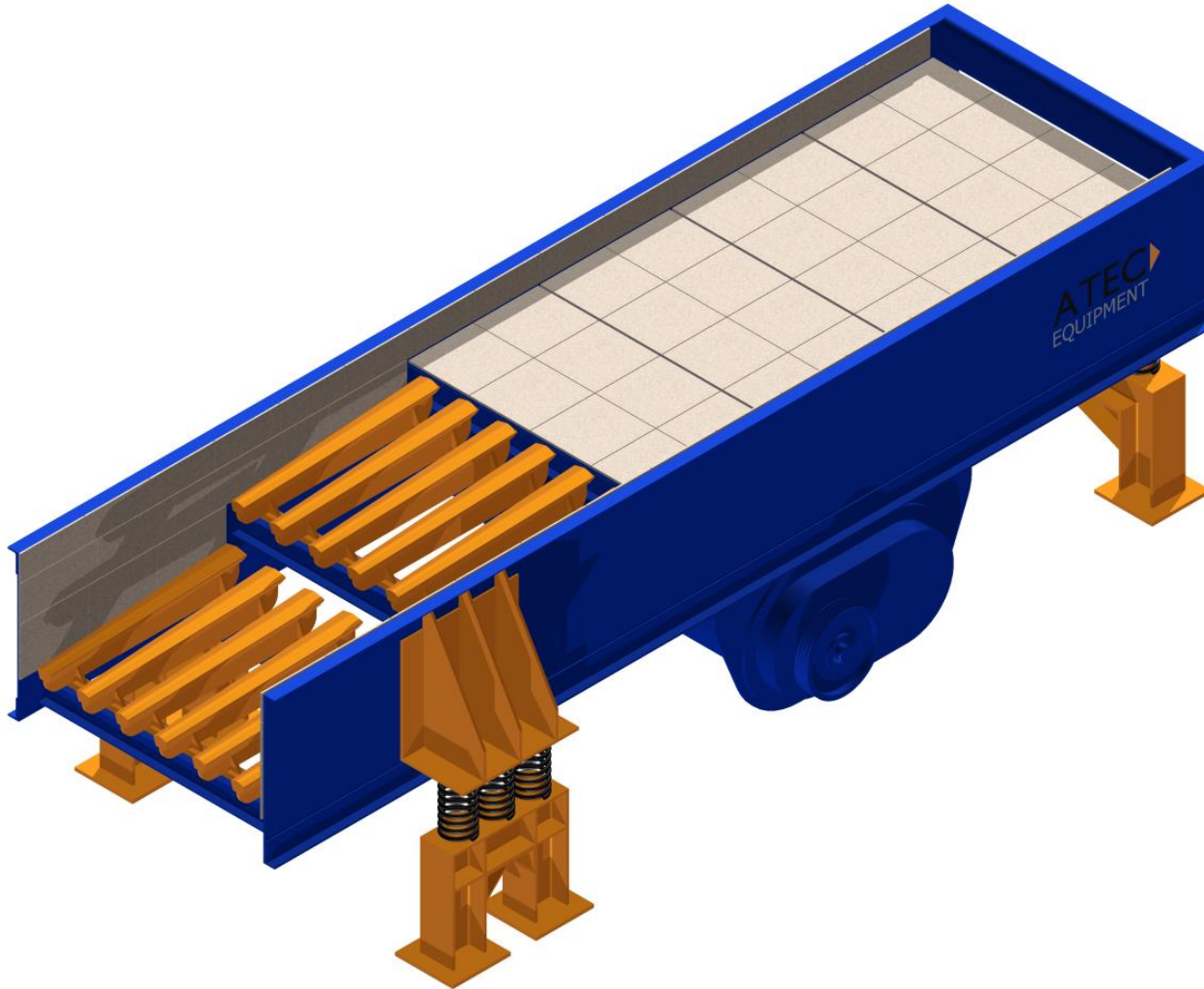


# Vibrating Grizzly Feeder Model

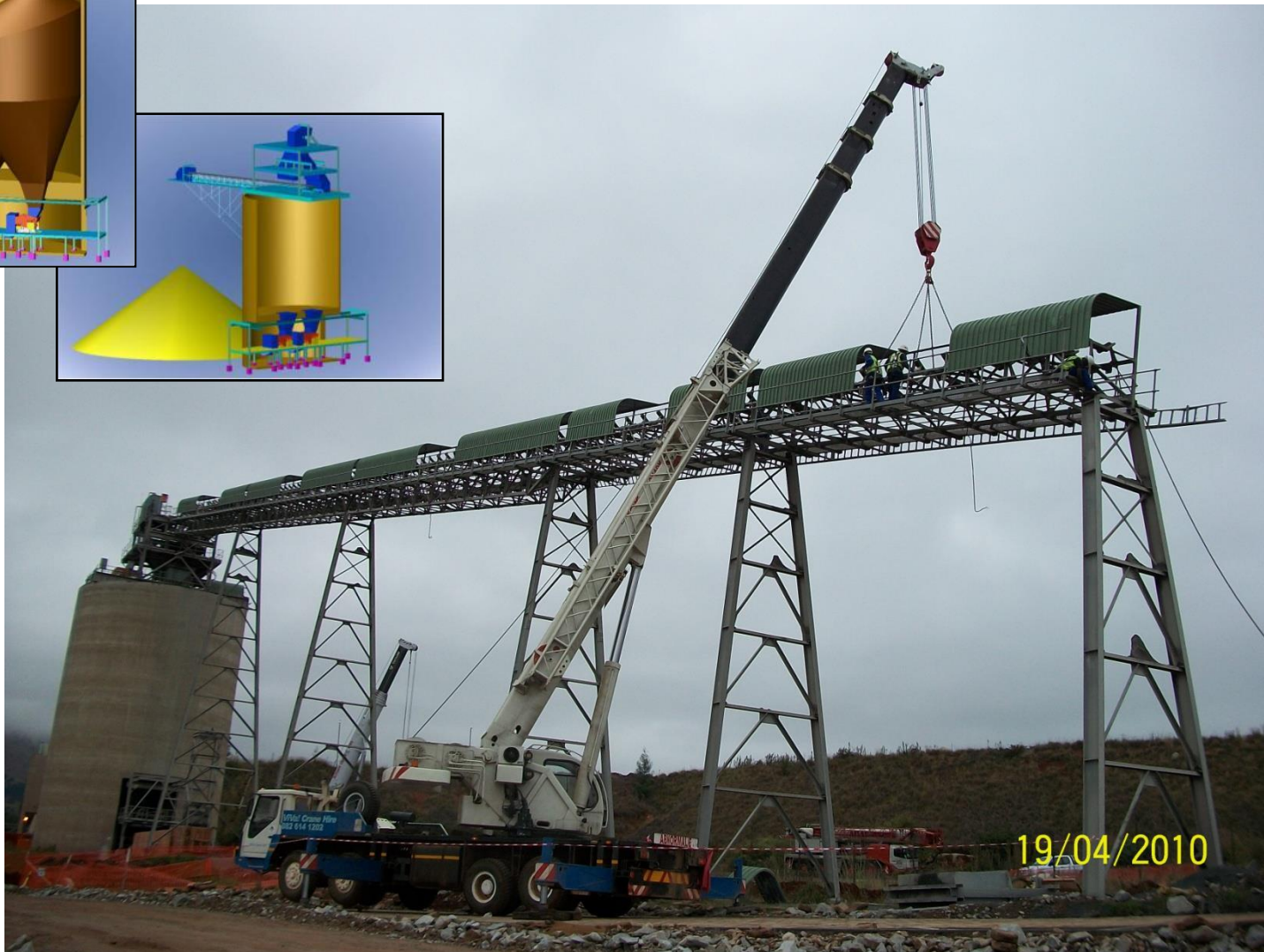
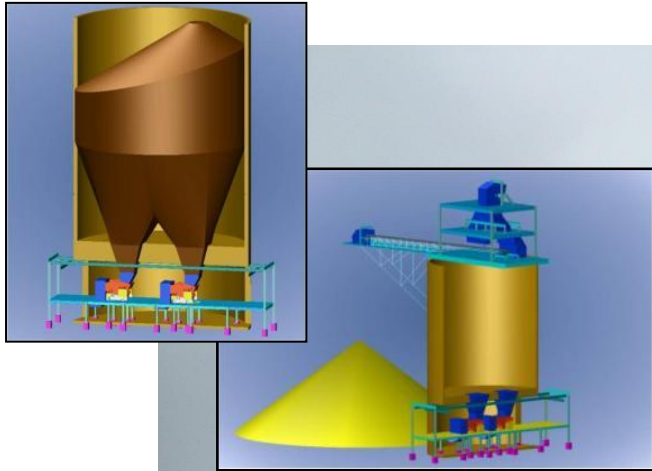


# Linear Grizzly Feeder Model

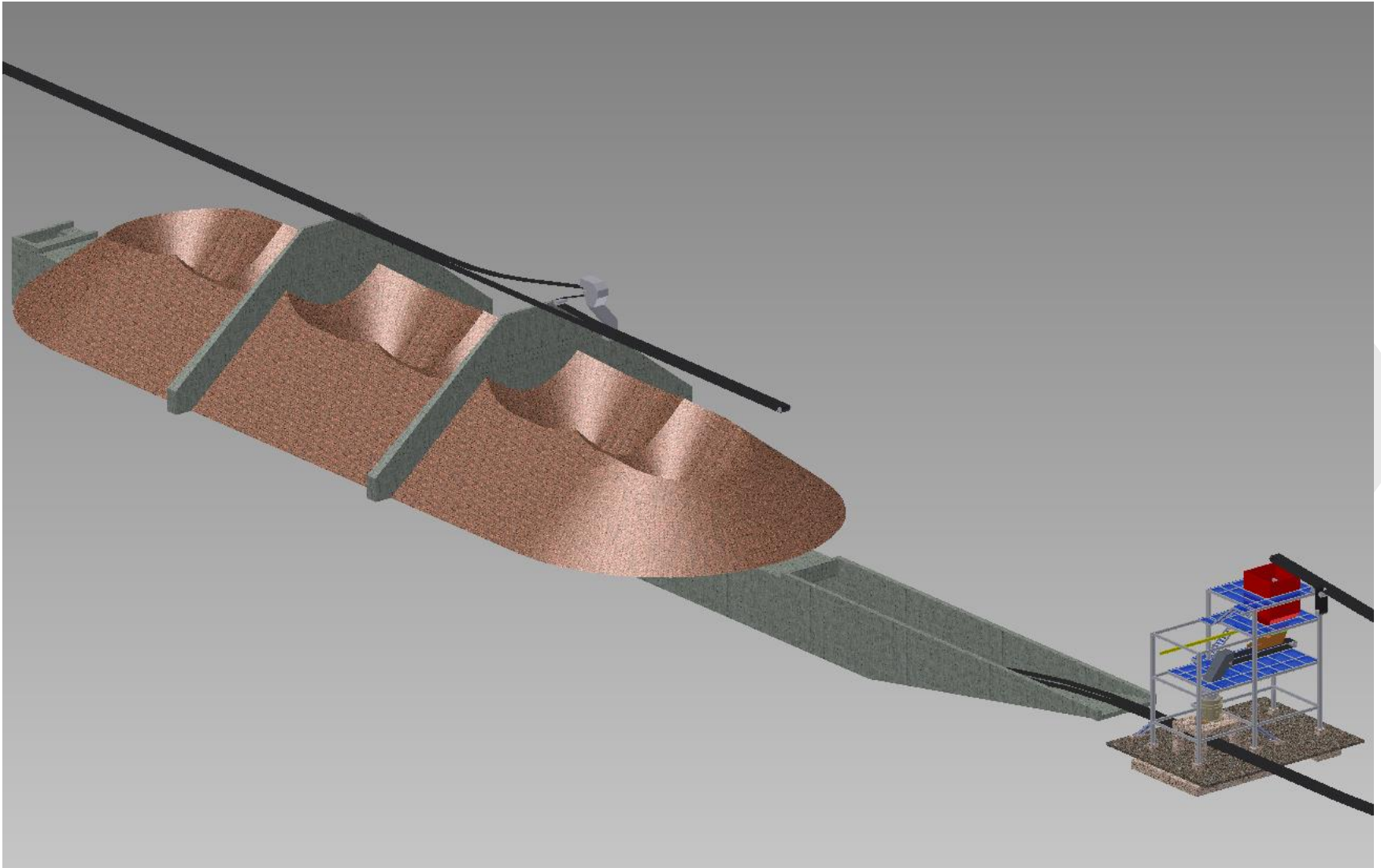
**ATEC**   
EQUIPMENT  
innovative process solutions



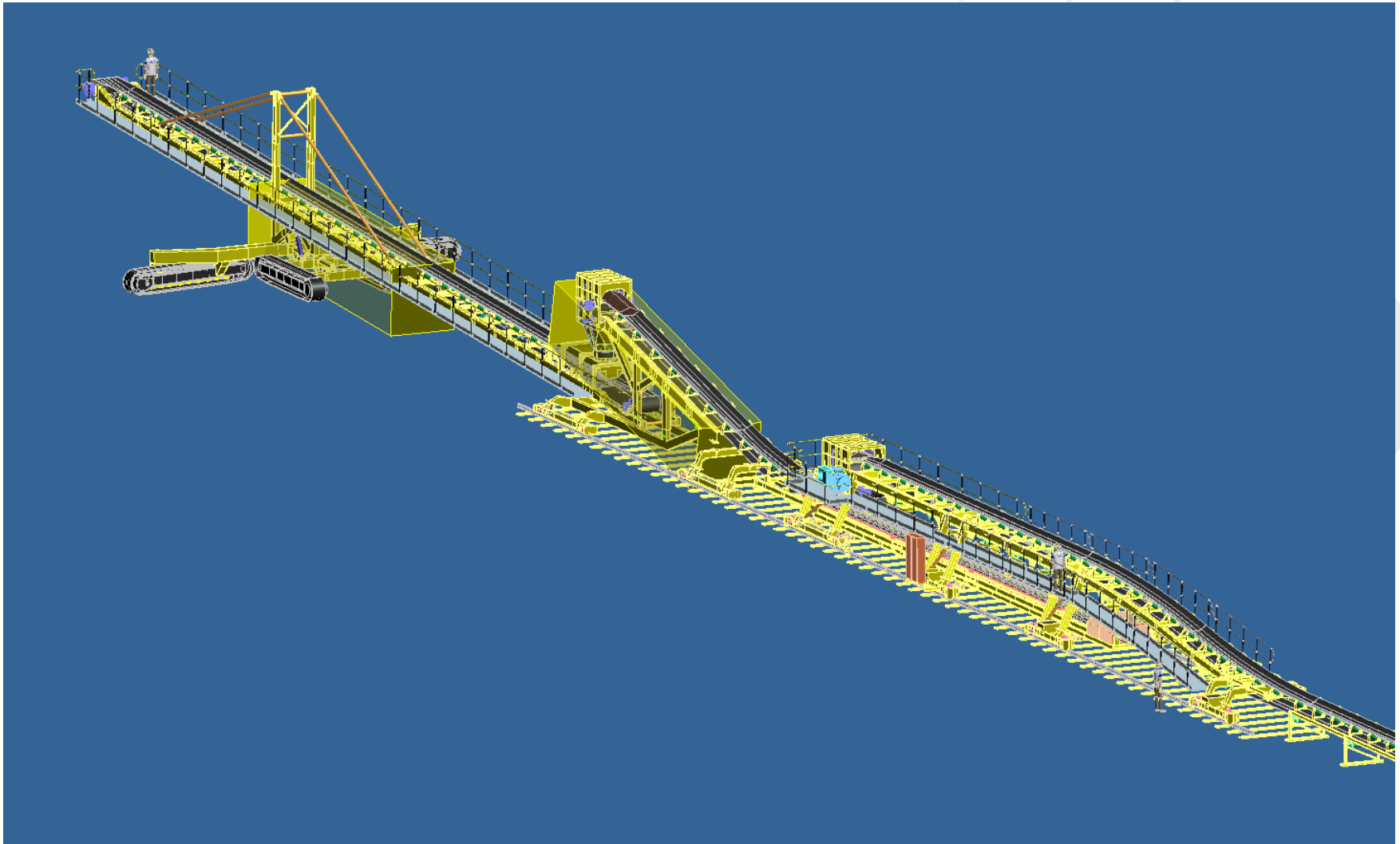
# Silo conveyor installation



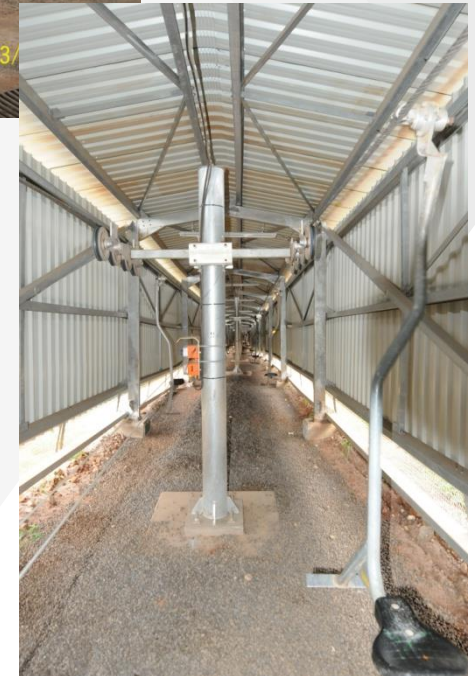
# Buffer Stockpile with Tripper



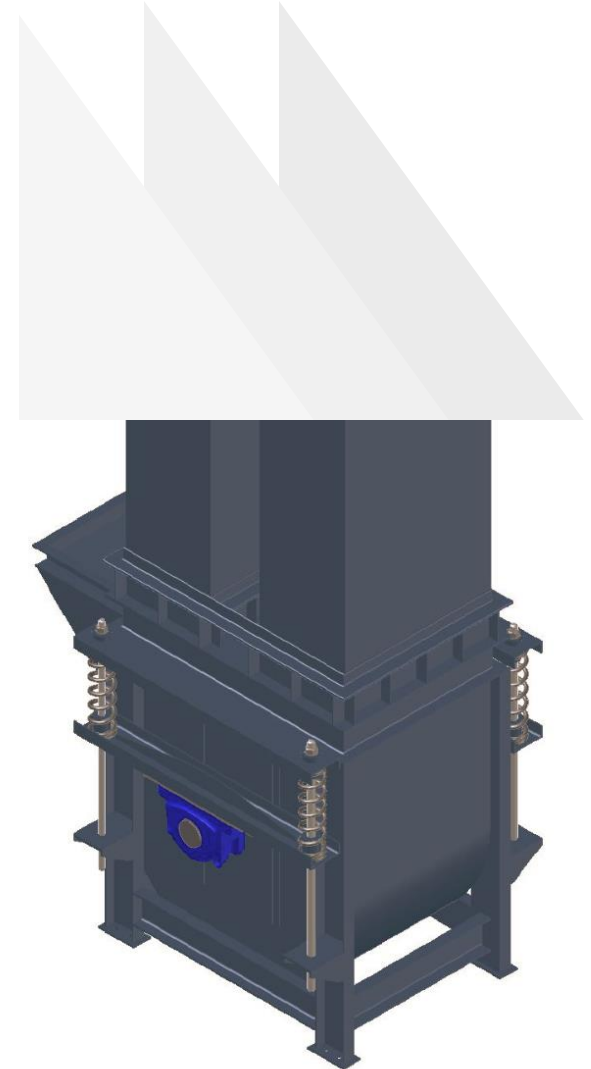
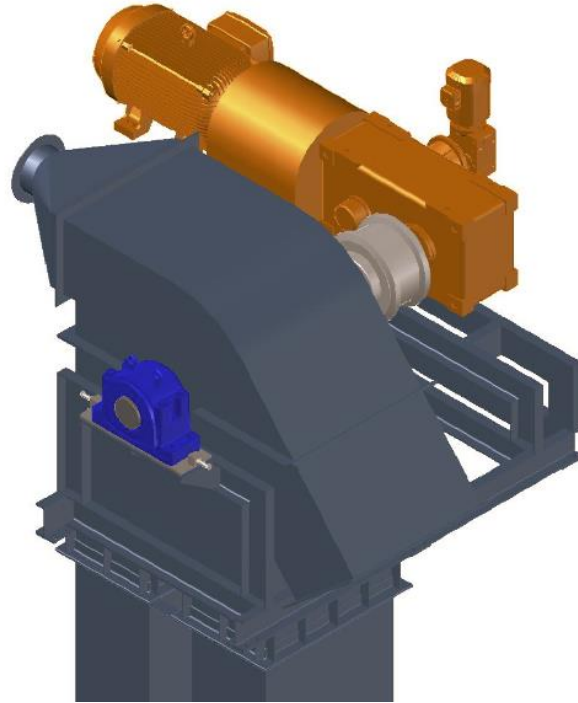
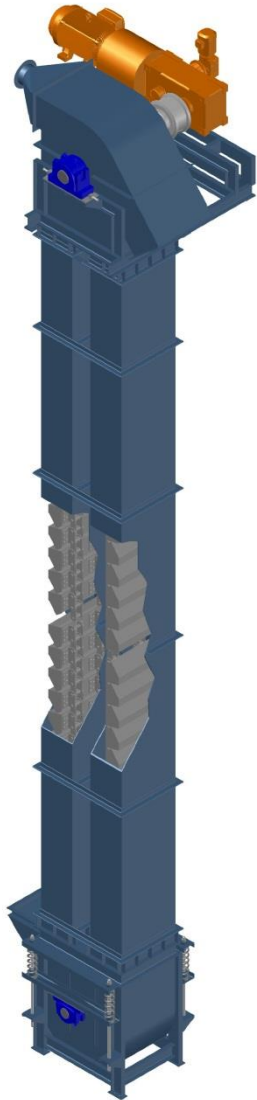
# Slewing / Extendable Stacking System with Grasshopper



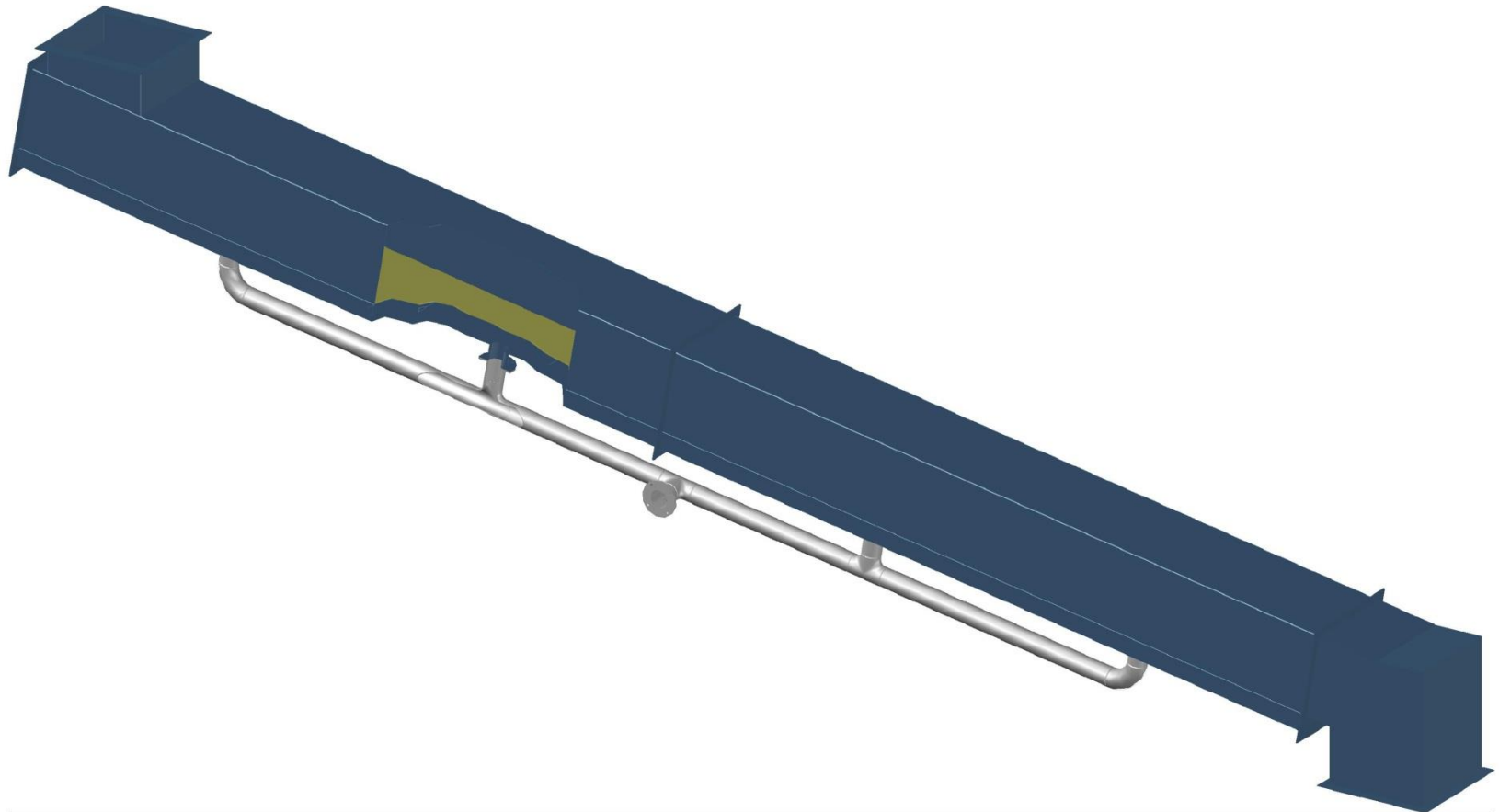
# Materials Handling



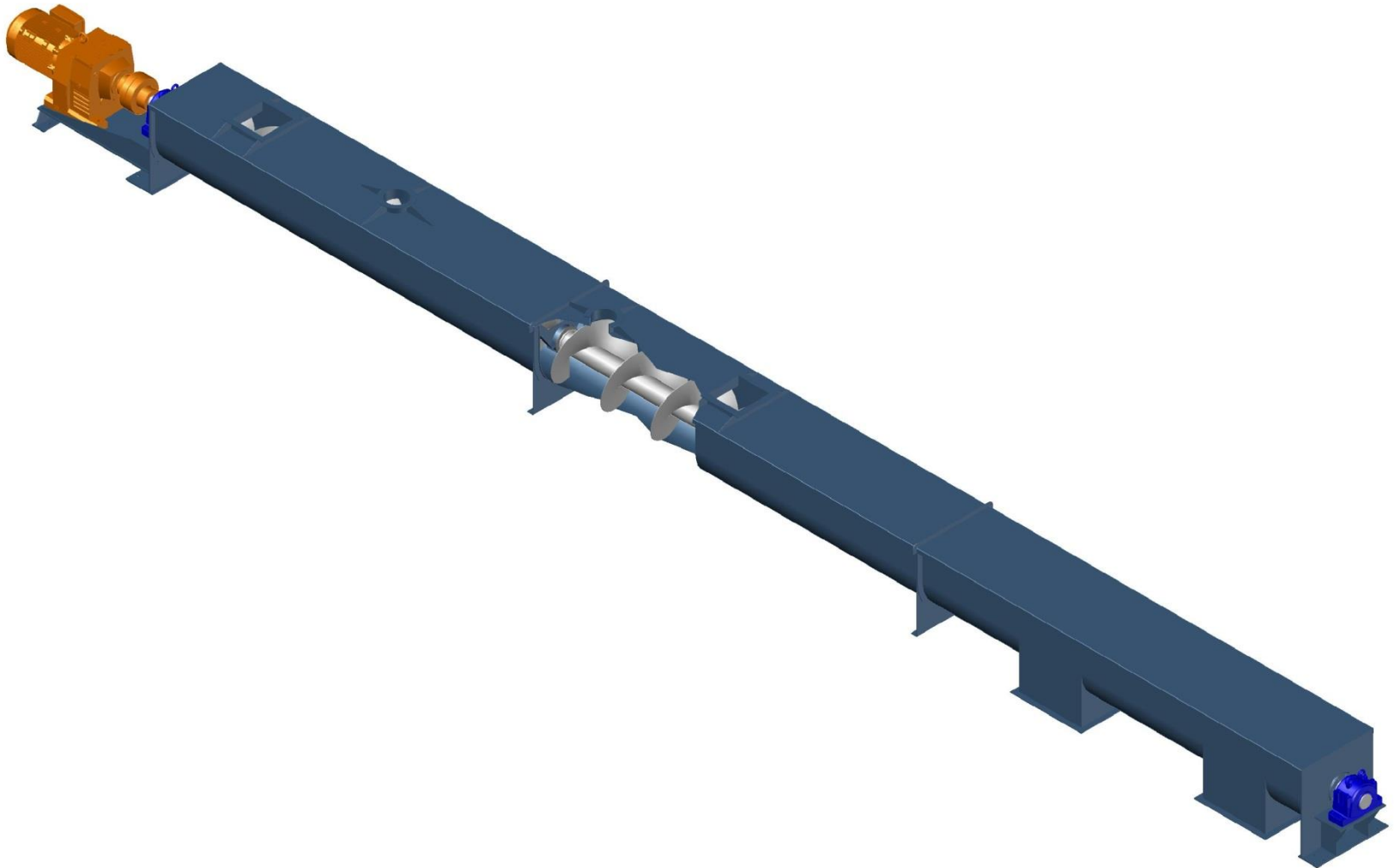
# Bucket Elevator



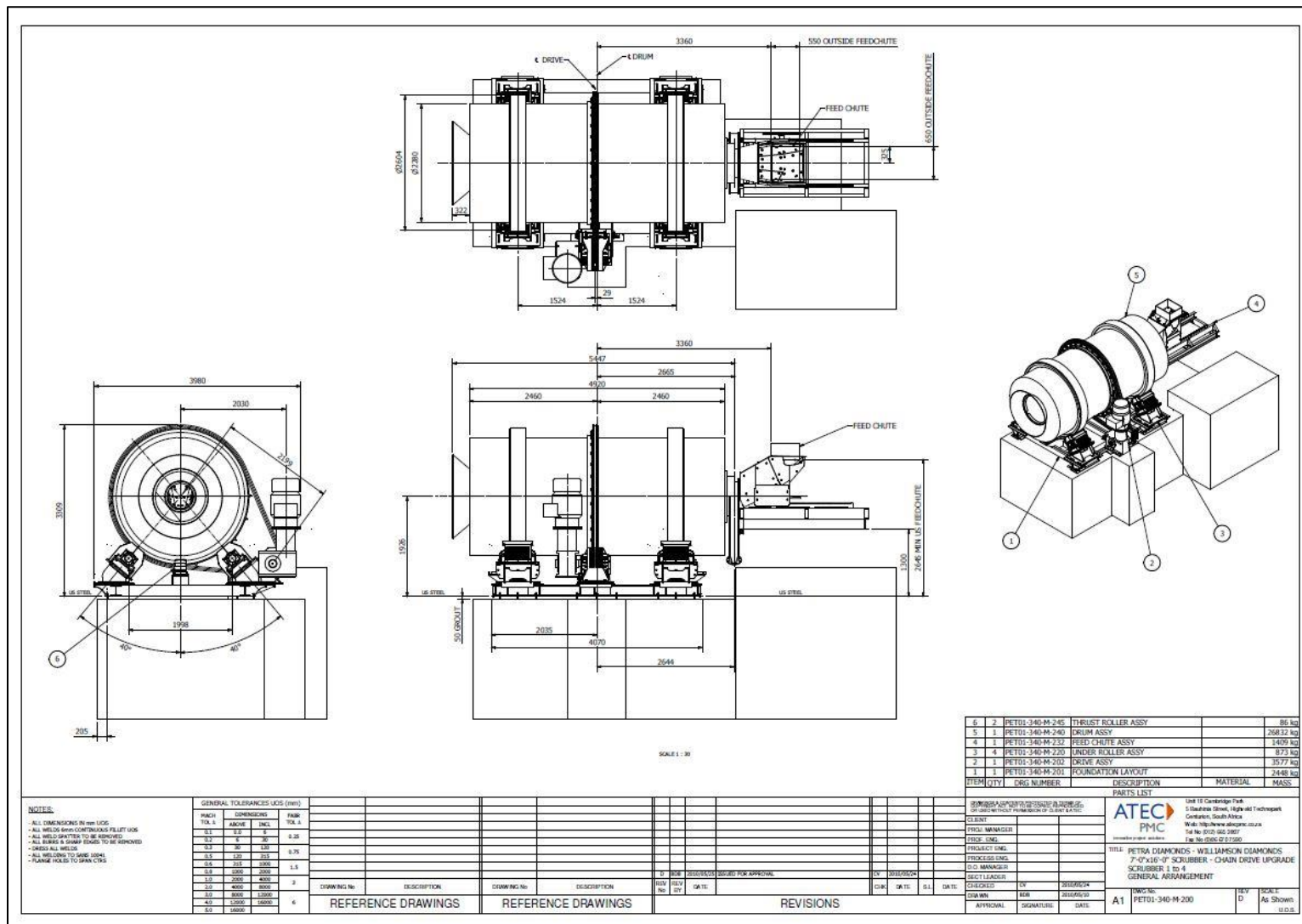
# Air Slide



# Screw Feeders



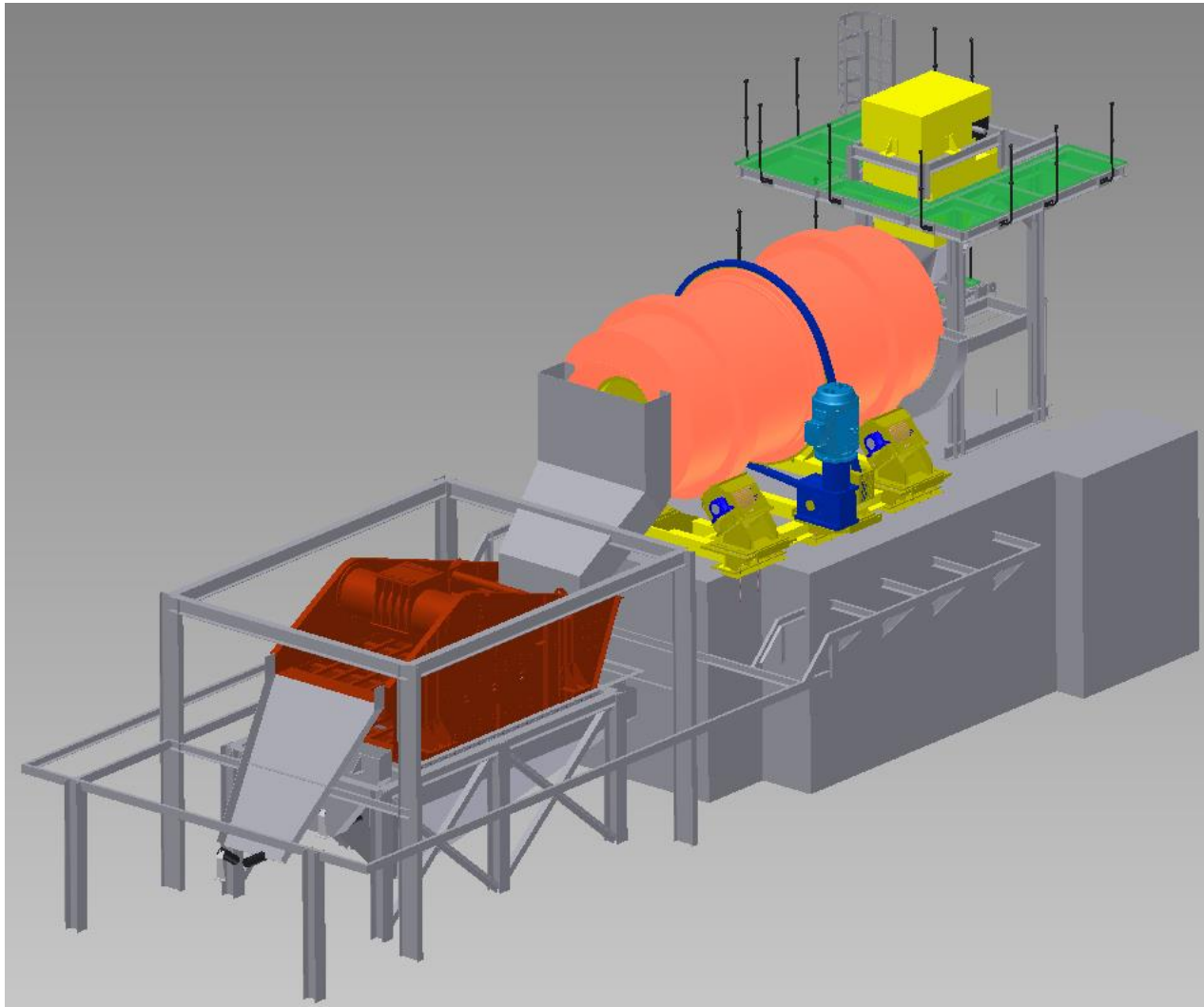
**ATEC**   
**EQUIPMENT**  
innovative process solutions



# Scrubber, rollers, drive



# Scrubber / Screen Model

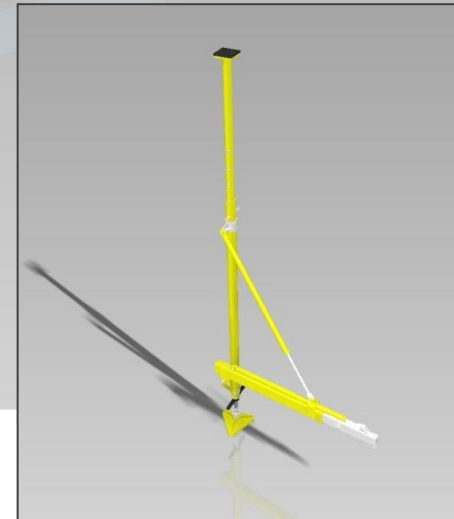
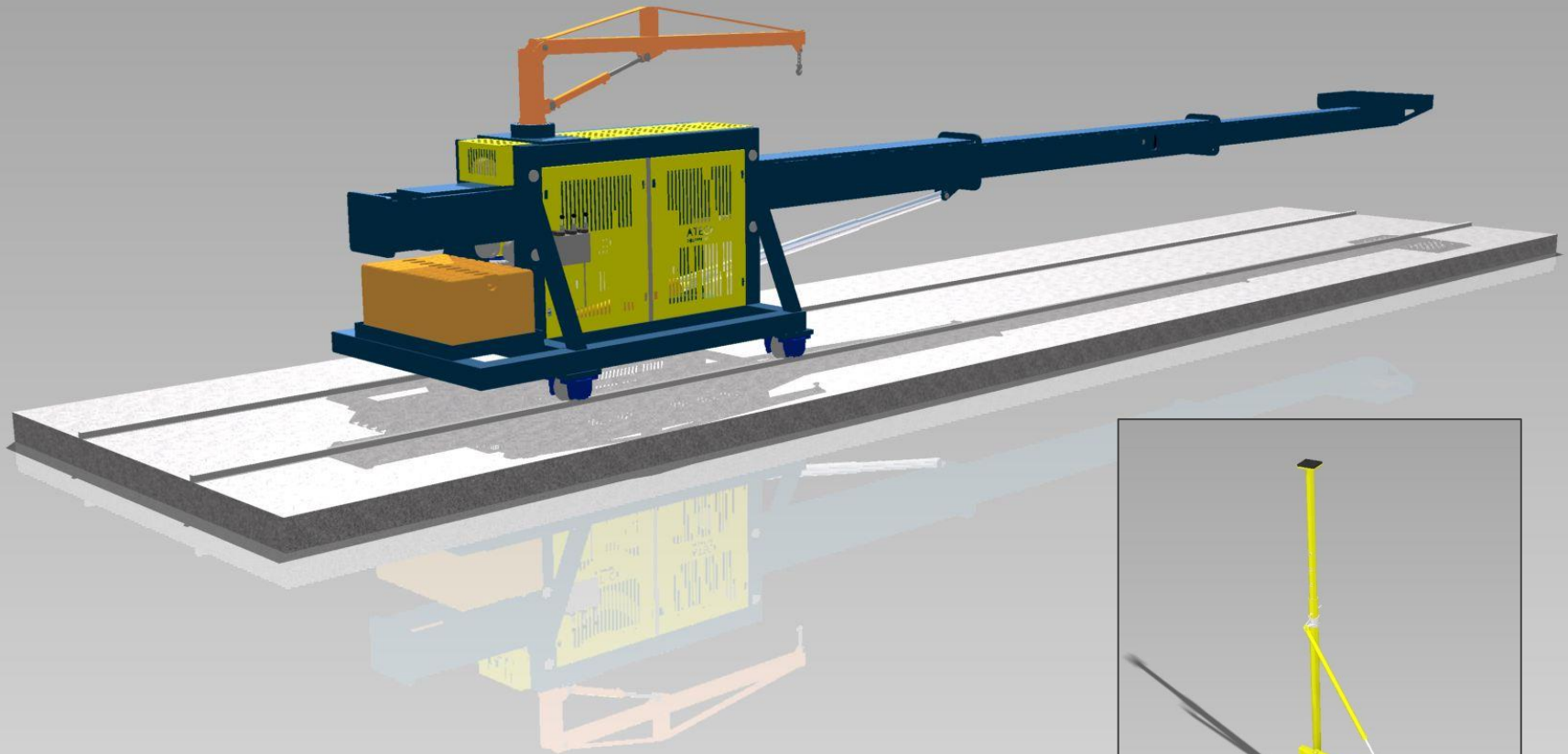


# Scrubber / Screen Installation

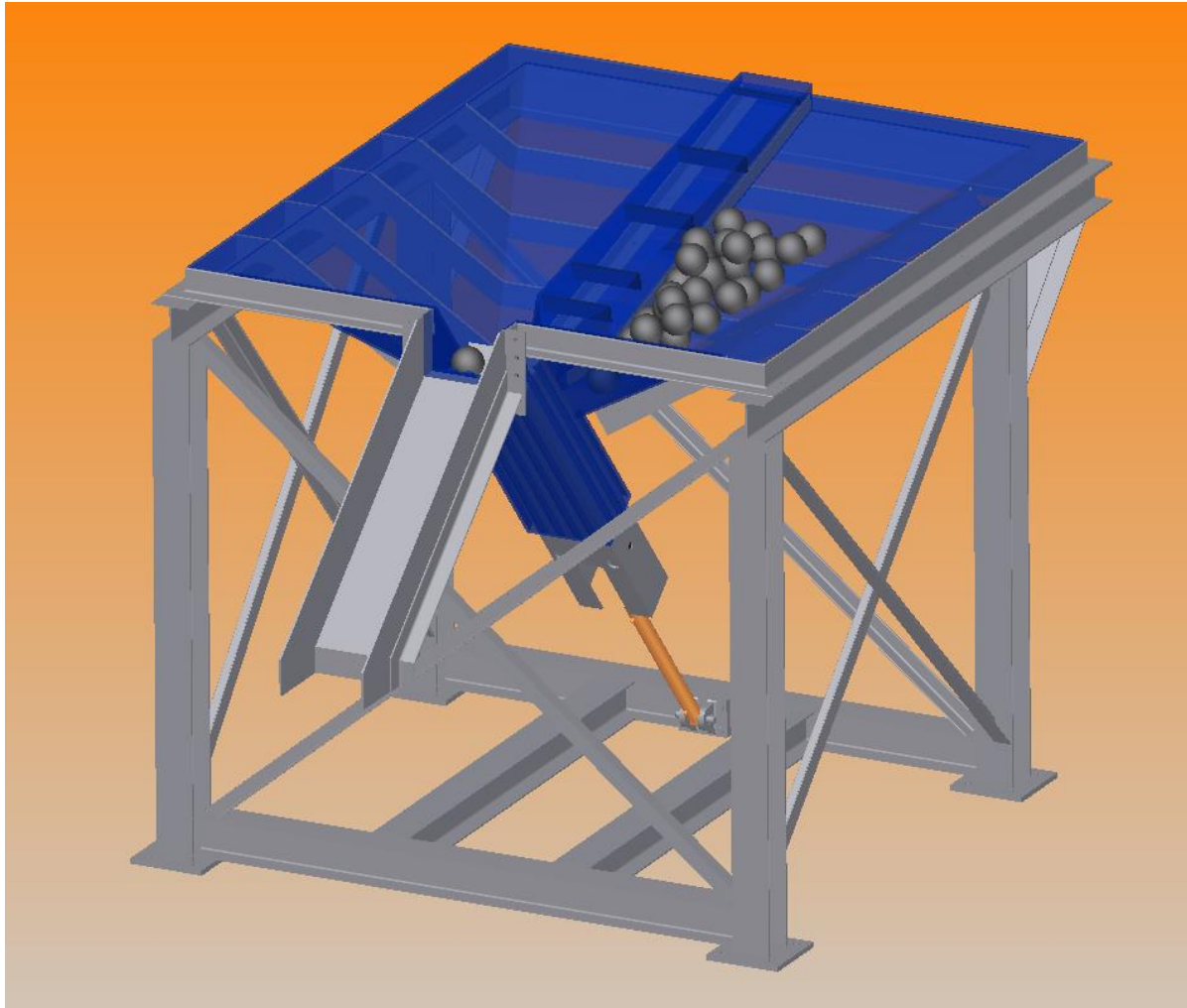


# Mill Liner Handler with Mill Mast

**ATEC**   
**EQUIPMENT**  
innovative process solutions



# Mill Ball Charger

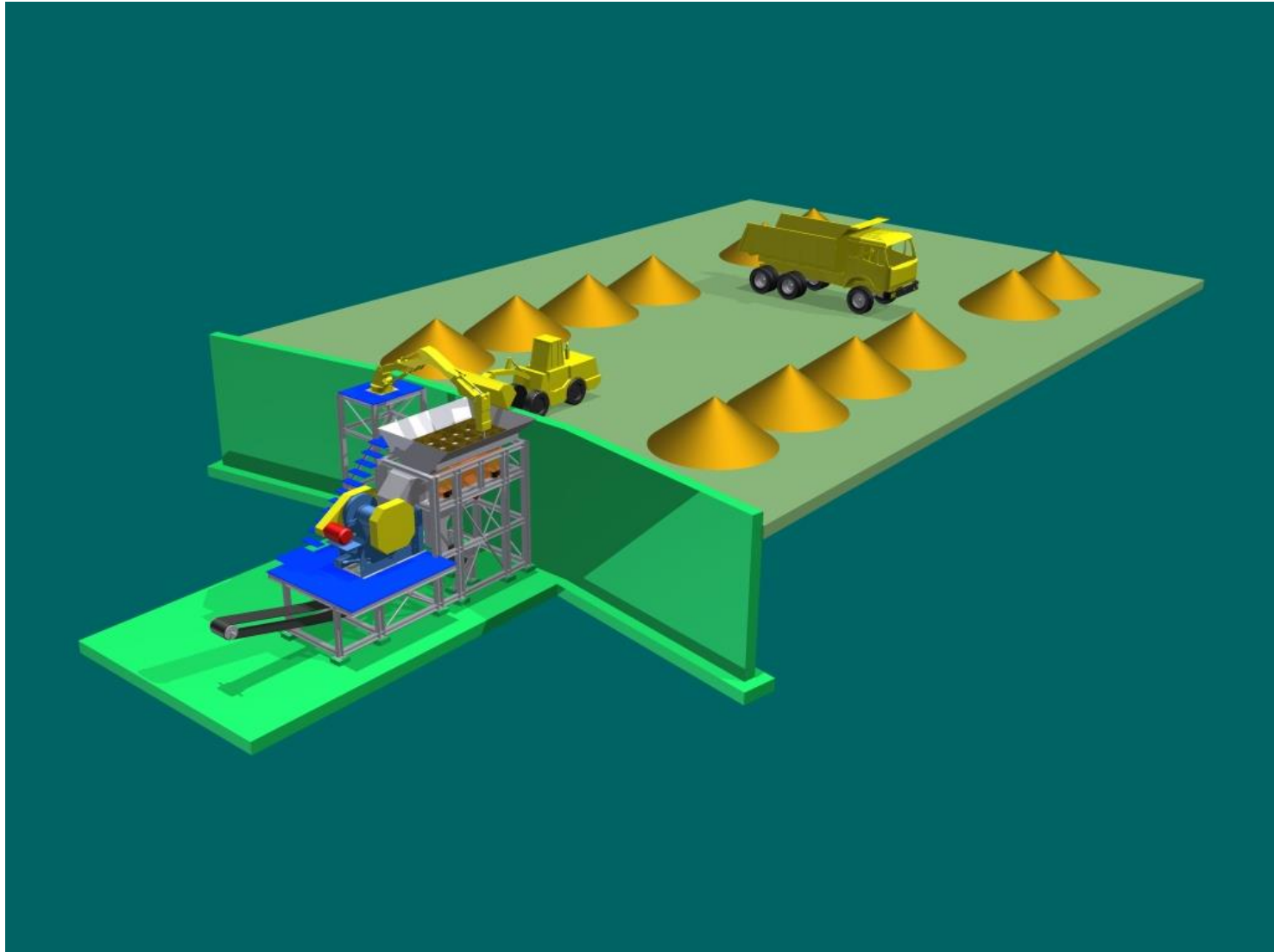




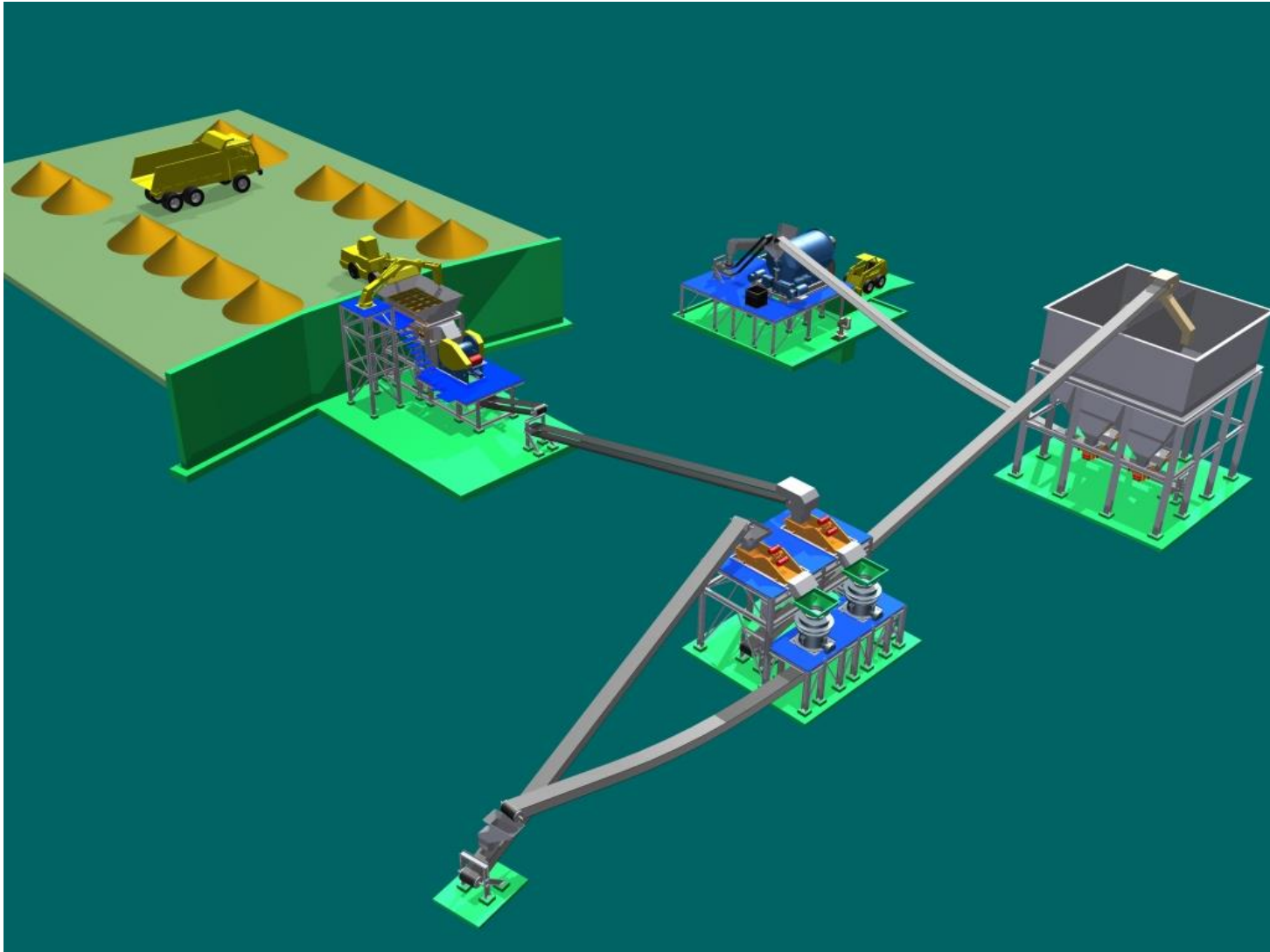
Background to

# **ATEQ MODULAR DESIGNS**

# Primary Tip



# Crushing/Screening/Milling





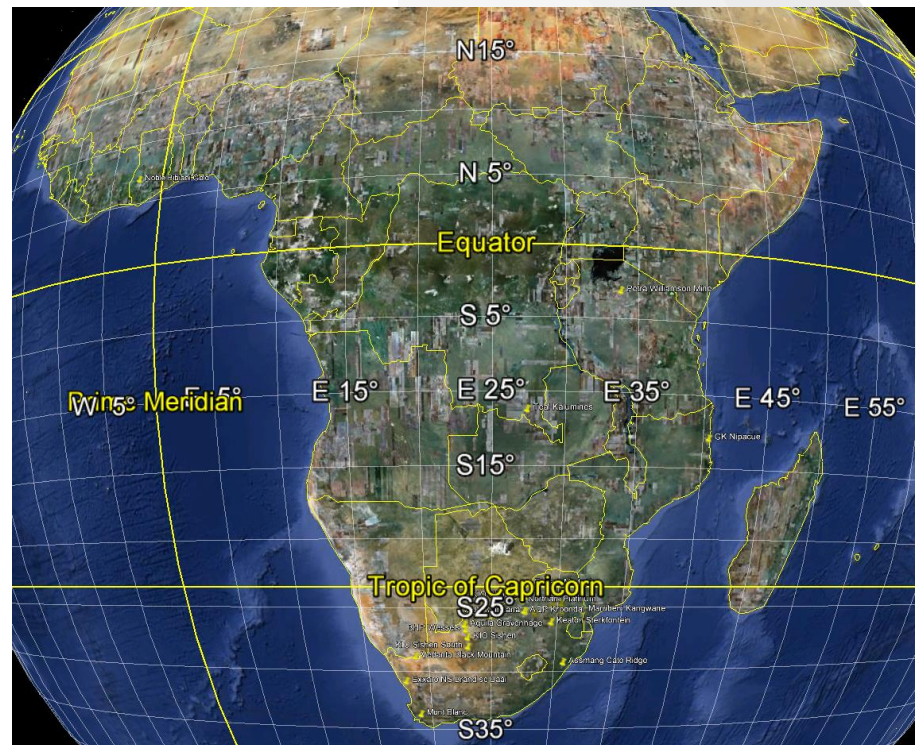
In conclusion

**ATEQ ADVANTAGE**

# Working throughout Africa

ATEC Equipment is based in South Africa, but source equipment and parts globally to provide the best solutions to our clients throughout Africa.

We have already installed equipment in Southern, Central and West Africa, and are looking to build long term relationships across the continent.



# Conclusion

**ATEC Equipment** provides innovative process systems to clients in the mining, minerals processing and industrial environments.

We have established a range of specialized equipment to meet the needs of clients in these industries, ranging from materials handling systems to specialized equipment applications.

**ATEC Equipment's** advantage lies in working closely with clients to provide equipment or systems that meet their particular needs, develop customized solutions or assist with implementation.

# Contact Details

ATEC Equipment (Pty) Ltd  
41 Aspen Crescent, Zwartkop x4,  
Centurion, South Africa

Phone: +27 12 663 8332

e-mail: [contact@atecequip.co.za](mailto:contact@atecequip.co.za)

**[www.atecequip.co.za](http://www.atecequip.co.za)**